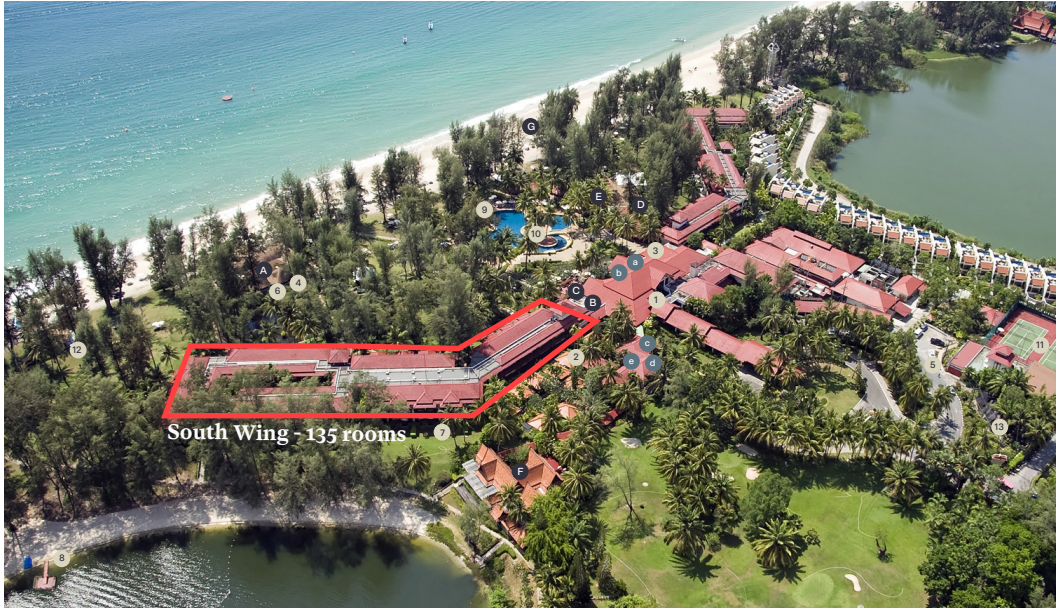


# Resort Map



South Wing - 135 rooms - 7

## Restaurants & Bars

- A Casuarina Beach Club**  
International cuisine, seafood & grills by the sea  
Dinner: 18:00 till 23:00 \*seasonality, open from 1 November till 31 March  
Co-working Space: 09:00 till 17:00, available during April till October
- B Horizon Lounge**  
A selection of beverages, coffee and cakes and live band performance  
From 11:00 till 24:00 \*the live band performs as per schedule
- C Laguna Cafe**  
All day dining restaurant serves international cuisine  
Breakfast: 07:00 till 10:30  
Lunch: 10:30 till 18:00  
Dinner: 18:00 till 23:00 \*last order at 22:30
- D La Trattoria**  
An award winning Italian restaurant  
Breakfast: 07:00 till 10:30 \*available for Dusit Club guests during high season  
Dinner: 18:00 till 22:00 \*last order at 21:30
- E Pool Cafe**  
International cuisine for light lunch, snacks, refreshing drinks  
From: 11:00 till 19:00 \*last order at 18:30
- F Benjarong**  
Overlooking the pristine lagoon serves authentic Thai cuisine  
Dinner: 18:00 till 22:00 \*seasonality, open from 1 November till 31 March
- G The Beach Bar**  
The Sunset chilling beach lounge with refreshing drinks and light snacks  
Open: 16:00 till 20:00 \*seasonality, open from 1 November till 30 April

## Facilities

- 1 Lobby
- 2 Angsana Spa
- 3 Beauty Salon
- 4 Busy Bee Kids Club
- 5 Car Parking
- 6 Fitness Centre
- 7 Dusit D Farm
- 8 Jetty
- 9 Petanque
- 10 Swimming Pool
- 11 Tennis Courts
- 12 Watersport Centre
- 13 Hen House

## Meeting Venues

- a Dusit Hall
- b Laguna Hall
- c Chatra Room
- d Suriyan Room
- e Dara Room

## TIME TABLE TO LAGUNA GATE

From Canal Village To Gate
13:00 hr.
15:00 hr.
19:00 hr.
21:00 hr.

From Gate To Canal Village
13:10 hr.
15:10 hr.
19:10 hr.
21:10 hr.

**Dusit Thani**

LAGUNA • PHUKET