

RAFFLES *Fairmont* swissôtel



HOTELS & RESORTS



**RAFFLES**  
HOTELS & RESORTS

*Fairmont*  
HOTELS & RESORTS

**swissôtel**  
Hotels & Resorts

**THREE BRANDS, ONE COMPANY**





*Fairmont*  
HOTELS & RESORTS



swissôtel  
Hotels & Resorts



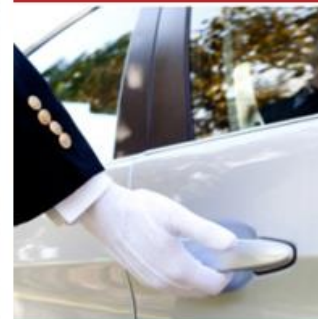
10 Hotels



70 Hotels



31 Hotels



20 Countries



18 Countries



## FRHI BRAND OVERVIEW

RAFFLES *Fairmont* swissôtel



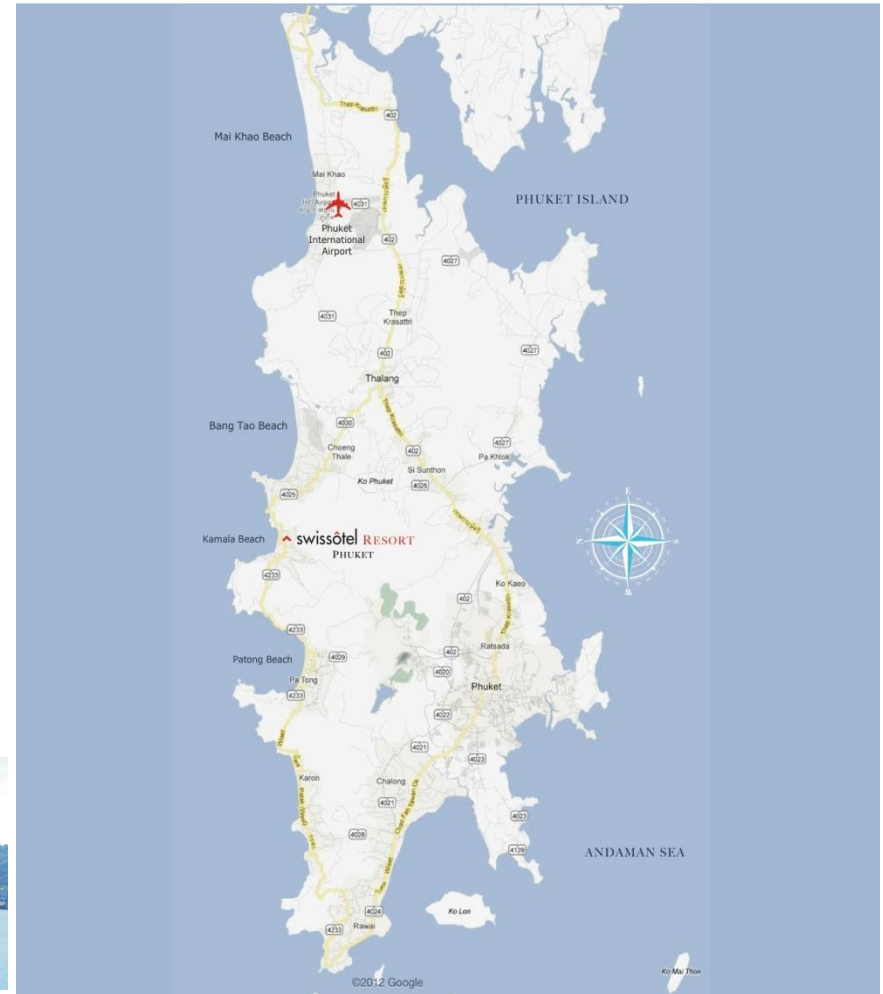
HOTELS & RESORTS





Phuket, “the Pearl of the Andaman Sea”, is located in Southern Thailand on the west-facing Andaman Sea coastline. Phuket top earner has been tourism, which has transformed the island into Thailand's wealthiest province. It enjoys great popularity as a travel destination. Most beaches are on the west coast with Phuket to the south-east and the airport in the north.

- Phuket is Thailand's largest island, surrounded by 32 smaller islands.
- 860 km from Bangkok.
- 540 km<sup>2</sup> of land area and many sandy beaches.
- A rich culture, a beautiful coastline, spectacular natural sights, loads of outdoor sports and activities, shopping, nightlife and dining are just a few of its attractions.





Kamala Beach, a quiet stretch of sand just north of Patong, is a much favored destination for those who are looking for a tropical escape away from the crowds. Surrounded by deep forested hills, this well-enclosed bay and fishing village is easily one of the most beautiful places in Phuket. It is little wonder then that Kamala attracts a number of visitors who set base here to soak in the tranquility and beautiful views of the surroundings, and explore the rest of the island.





**Chalong Temple**



**Big Buddha**



**Old Phuket Town**



**Promthep Cape**



**Kamala Beach**



**Coral Island**



**Phuket Fantasea**



**Simon Cabaret**



**James Bond Island**



**Thai Boxing**



**Kata View Point**



**Patong Beach**





**Laguna Phuket Golf Club**  
15 minute-drive from the resort



**Blue Canyon Lake Course**  
30 minute-drive from the resort



**Loch Palm Golf club**  
30 minute-drive from the resort



**Phuket Country Club**  
26 minute-drive from the resort



**Red Mountain Golf Club**  
26 minute-drive from the resort

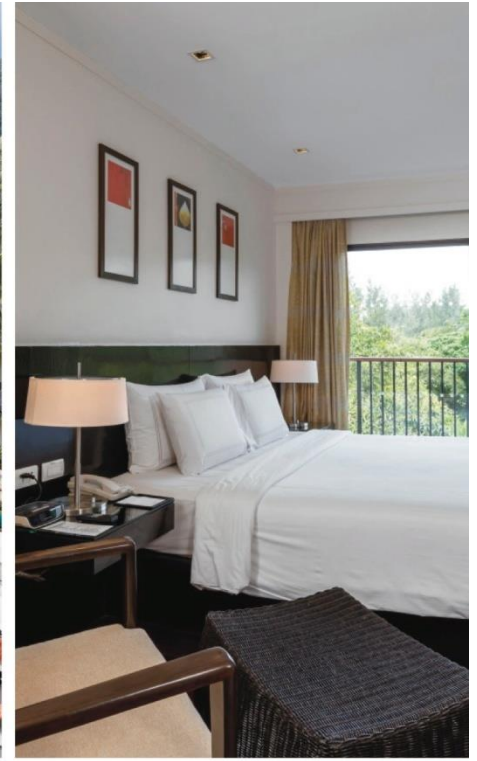


Round Trip	Departure Time	From	To
1 <sup>st</sup> Round	10:00 am	Swissôtel	Patong
	02:00 pm	Patong	Swissôtel
2 <sup>nd</sup> Round	01:30 pm	Swissôtel	Patong
	05:30 pm	Patong	Swissôtel
3 <sup>rd</sup> Round	04:00 pm	Swissôtel	Patong
	08:00 pm	Patong	Swissôtel

We are pleased to offer you a complimentary Shuttle Service from the Swissôtel Resort Phuket to the center of Patong. The Drop-off and Pickup point is located next to Phuket's largest shopping center Juncceylon and also the entertainment district and the beach can be easily reached within walking distance

## Terms & Conditions:

- Prior reservation of 1 day is required.
- Seats are limited and subject to availability.
- The schedule is not changeable.
- Please be punctual as the shuttle bus will departure on time.
- Round Trip 1 and 2 can't be combined or mixed.



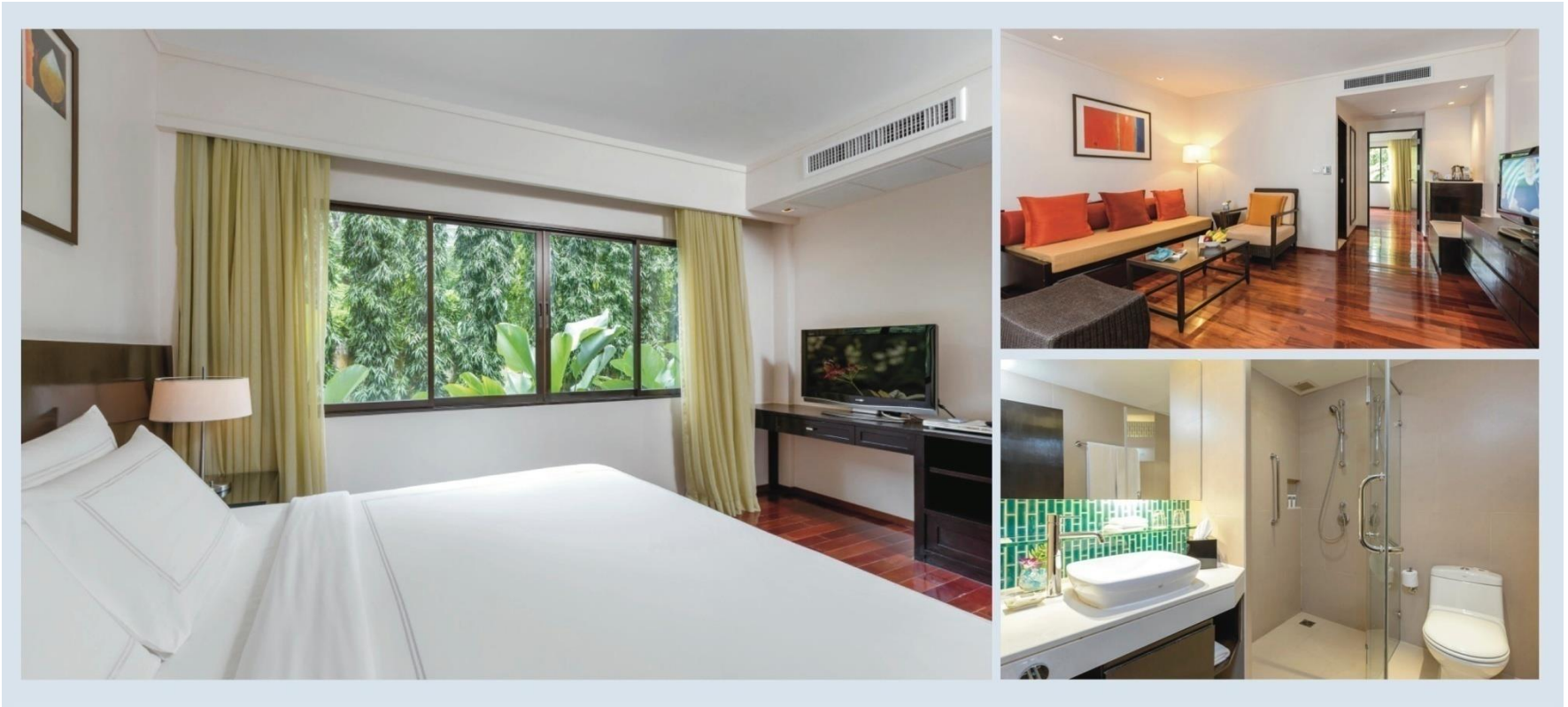
Designed for the discerning, modern travelers, Swissôtel Resort Phuket offers a choice of one, two and three bedroom suites. Besides natural sun-kissed beaches and turquoise seas, the 4 star resort warmly welcomes its guests with an extensive range of facilities including diverse dining options, a lagoon-style swimming pool, spa and fitness centre, Kids World and a wide array of recreational activities.



Room Category	Size(SQM) including Terrace	Number of Room		
		Twin	Double	Total
One - Bedroom Deluxe Suite	43	20	70	90
One - Bedroom Pool Terrace Suite	43	-	18	18
Two - Bedroom Deluxe Suite	62	Fixed Twin / Double		52
Two - Bedroom Pool Terrace Suite	62	Fixed Twin / Double		12
Three - Bedroom Deluxe Suite	95	Fixed Twin / Double / Single		8

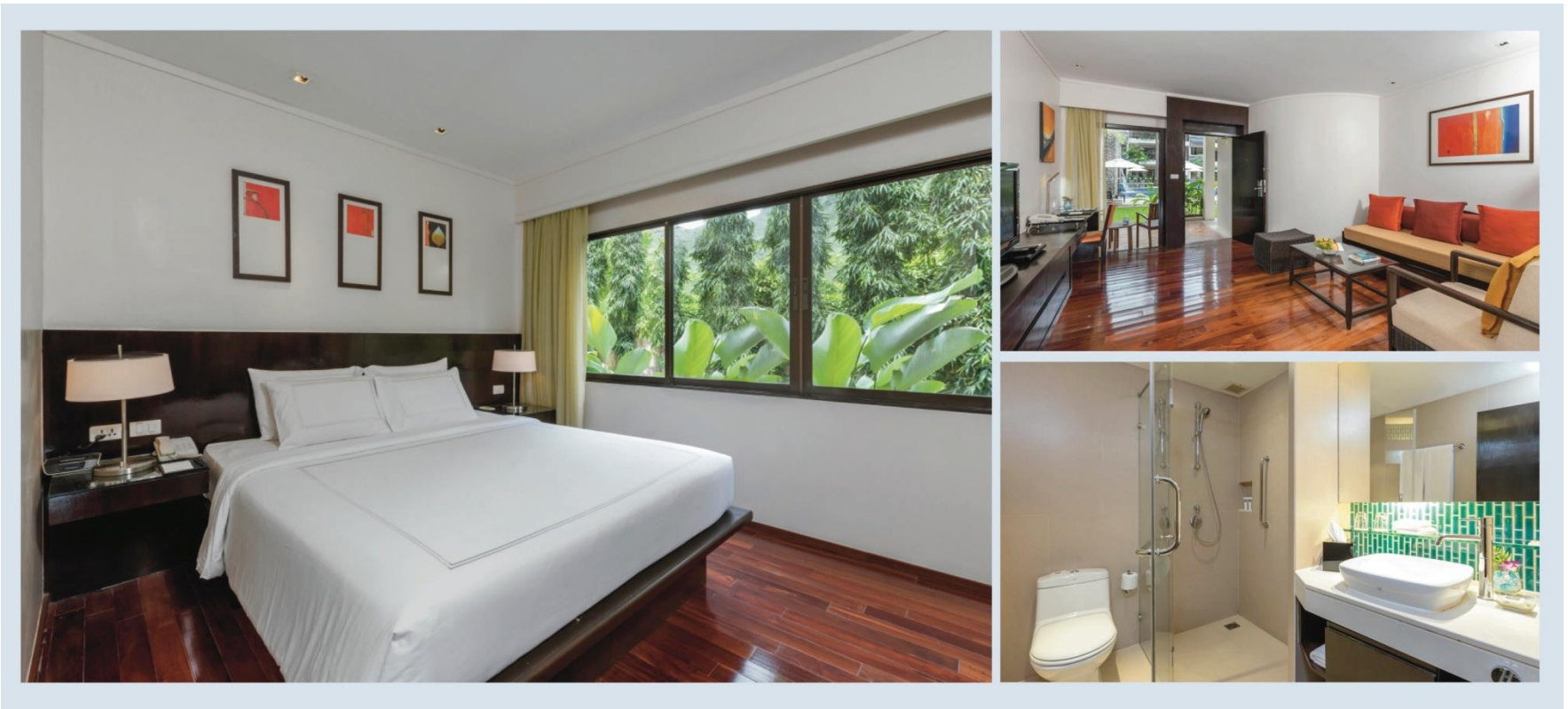






## ONE BEDROOM DELUXE SUITE

Perfect for guests seeking privacy along with spacious living areas, these 43-square meters suites offer king bedded bedrooms and living room with balconies.



### ONE BEDROOM POOL TERRACE SUITE

With terrace offering pool access, these 43-square meters suites on the ground floor presents private bedrooms with king-size beds and separate living rooms with direct access, facing the pool.

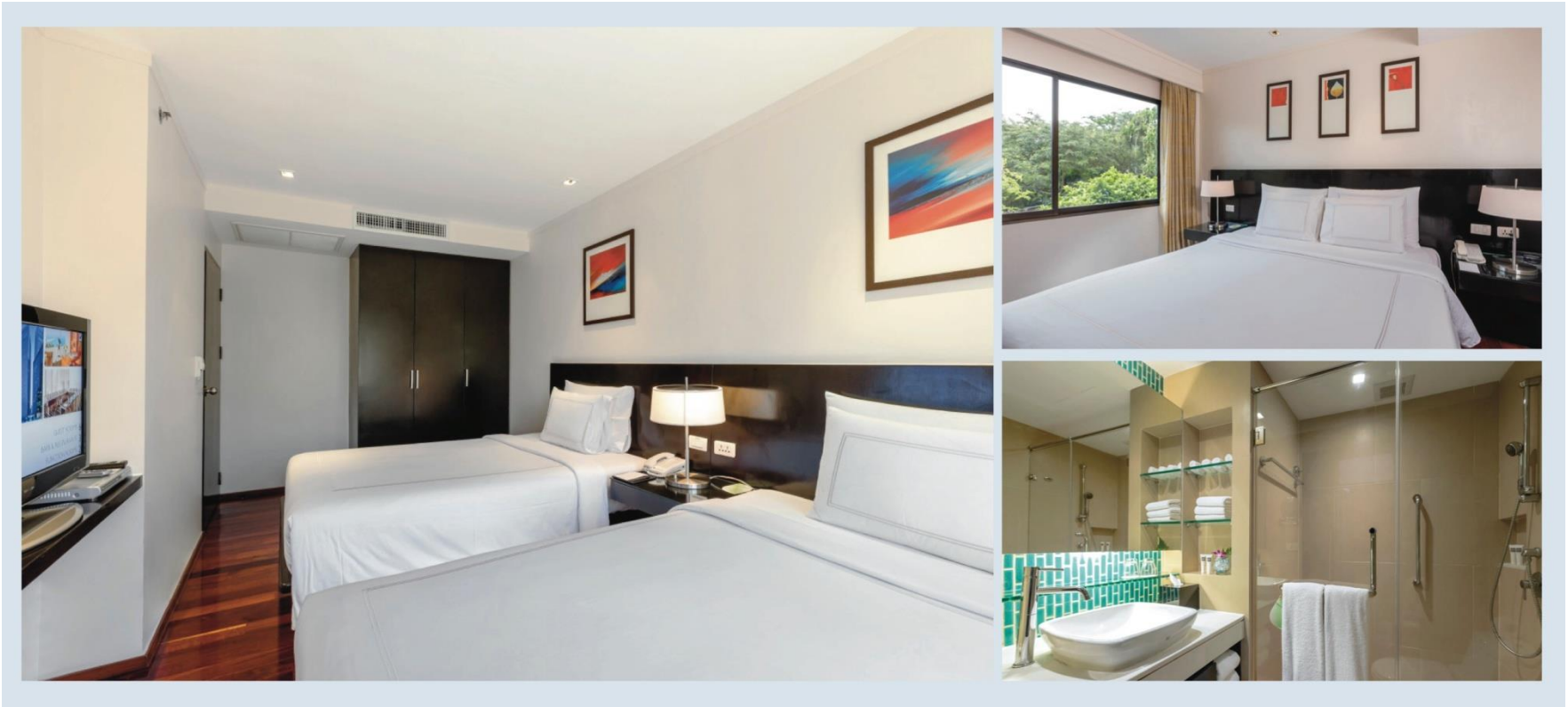


## TWO BEDROOM DELUXE SUITE

Suitable for families, these 62 square meters suites features two separate bedrooms, (with king and two queen) a living room that includes a kitchenette and dining area with a large spacious balcony.







## TWO BEDROOM POOL TERRACE SUITES

Located on the ground floor of the resort, each 62 square meters suite features two separate bedrooms with king bed and queen beds, as well as a living room including kitchenette and dining area with views of the pool and garden. There is direct access to the pool through the large terrace.









## THREE BEDROOM DELUXE SUITE

With a luxury of space and privacy, each 95-square meters suite features a spacious balcony, kitchenette, dining table and living room. The suite features 3 separate bedrooms with different bed size. ( King, queen and double queens)









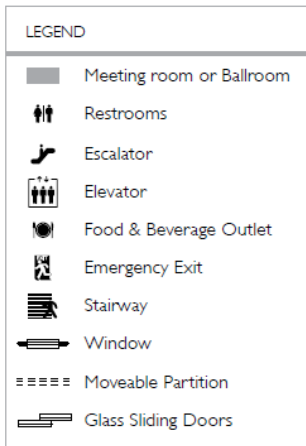
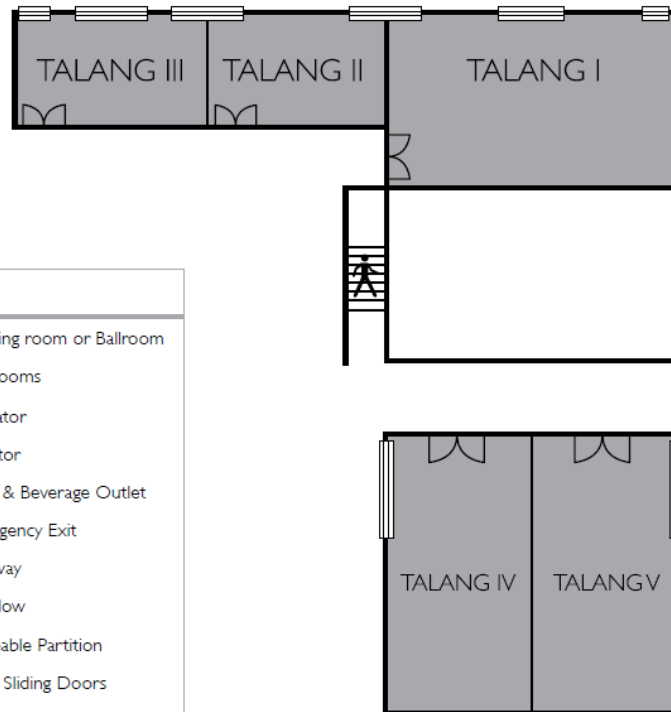
CAPACITY CHART

MEETING ROOMS	AREA M <sup>2</sup>	L	W	H	THEATRE	CLASS ROOM	U-SHAPE	BANQUET	BOARD ROOM
Talang I	55	5.5	10	2.35	42	36	22	-	22
Talang II	20	3.6	5.6	2.35	-	-	8	-	10
Talang III	22	3.6	6.3	2.35	-	-	8	-	10
Talang IV	41	4.6	9	2.35	36	30	15	-	16
Talang V	42	4.7	9	2.35	36	32	16	-	16
Talang Foyer	48	9.8	5	3.3	-	-	-	-	-
Kamala (I, II, III)	288	8.3	34.5	3.3	200	108	-	120	-
Kamala I	100	8.3	12	3.3	70	45	24	40	-
Kamala II	88	8.4	10.5	3.3	60	36	24	40	-
Kamala III	100	8.3	12	3.3	70	45	24	40	-
<b>Total</b>	<b>516</b>	-	-	-	-	-	-	-	-

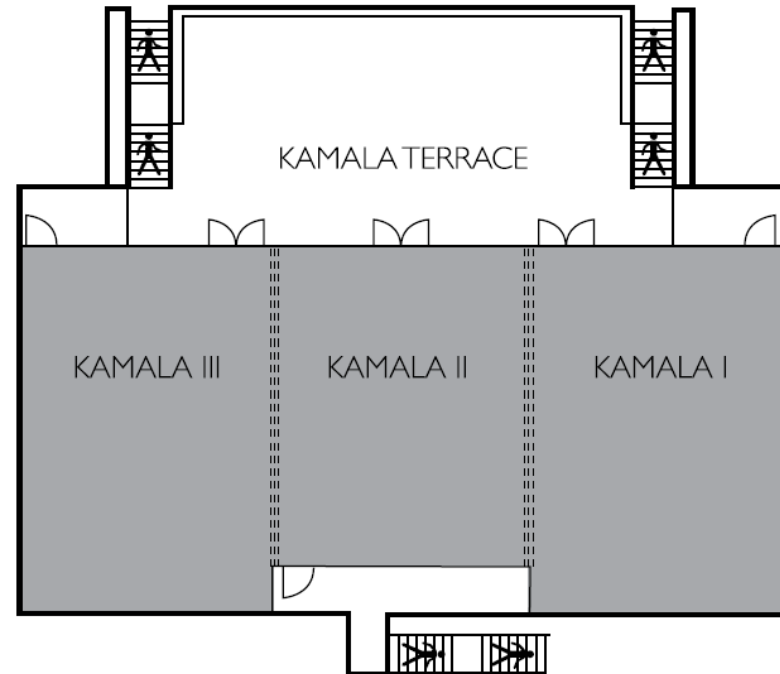
MEETING ROOM CAPACITY CHART

Swissôtel Resort Phuket offers a choice of eight function rooms for meetings and events, accommodating groups from 10 to 150 people. Be it a high-powered meeting, a conference, a wedding or a gala event, these function rooms present the ideal venue. Modern audiovisual technology and equipment is provided, as is a professional on-site event organizer to ensure that your meetings and events are a resounding success.

LEVEL 2 - ABOVE THE LOBBY



LEVEL 2 - ABOVE THE FITNESS CENTRE/KIDS WORLD



**MEETING ROOM FLOOR PLAN**  
(8 MEETING ROOMS)

The resort has meeting are of 516 square meters, featuring 8 function rooms and a pre-function area that can be configured to accommodate 10 to 150 guests.













### All day dining restaurant – Café

Opening hours: 06:30 - 23:00 hrs.



### Daily and Bakery – Grab & Go

Opening hours: 06:30 - 23:00 hrs.



### Pool Bar

Opening hours: 10:00 - 21:00 hrs.



### In-Room Dining

Opening hours: 06:30 - 23:00 hrs.





The Spa Three treatment rooms with Jacuzzis and saunas)

Opening hours: 10:00 – 20:00 hrs.

Fitness Centre (Offers exercise machines and strength-building equipment)

Opening hours: 07:00 – 21:00 hrs.



Kids World (Amusement and entertainment play zone for kids above 4 years)

Opening hours: 09:00 – 20:00 hrs.

Adventure Club (Organizes outdoor and indoor activities in Phuket)

Opening hours: 08:00 – 18:00 hrs.





- Yoga Class
- Snorkeling By Longtail Boat
- Fit Ball
- Pool – Diving
- Thai Cooking Class
- Adventure Tour By Bicycle
- Fishing By Longtail Boat
- Market Tour By Bicycle





- Nail Painting
- Sand Color Jell Making
- Umbrella Painting
- Soap Painting
- Glass Painting
- Bracelet Making
- Temporary Tattoo
- Soap Painting
- Handkerchief Painting
- Batik T-shirts



## The Swimming Pool

Opening hours: 07:00 – 20:00 hrs.





Hotel Address

100/10 Moo 3, Kamala, Kathu, Phuket 83150 Thailand

Tel: +66 (0) 76 303 000, Fax: +66 (0) 76 303 081

Email: [phuket@swissotel.com](mailto:phuket@swissotel.com)

[www.swissotel.com/phuket](http://www.swissotel.com/phuket)